



# Health, COVID-19 and Nature

---

**13<sup>th</sup> Annual Conference of the  
Arab Forum for Environment  
and Development (AFED)**

**Marco Lambertini  
Director General  
WWF International**





# The Planet is in crisis

1°C

Global Temperature increase since pre-industrial times...1,5° is danger zone!

1 M

Species threatened with Extinction

68%

overall decline in wildlife populations in 50 years!





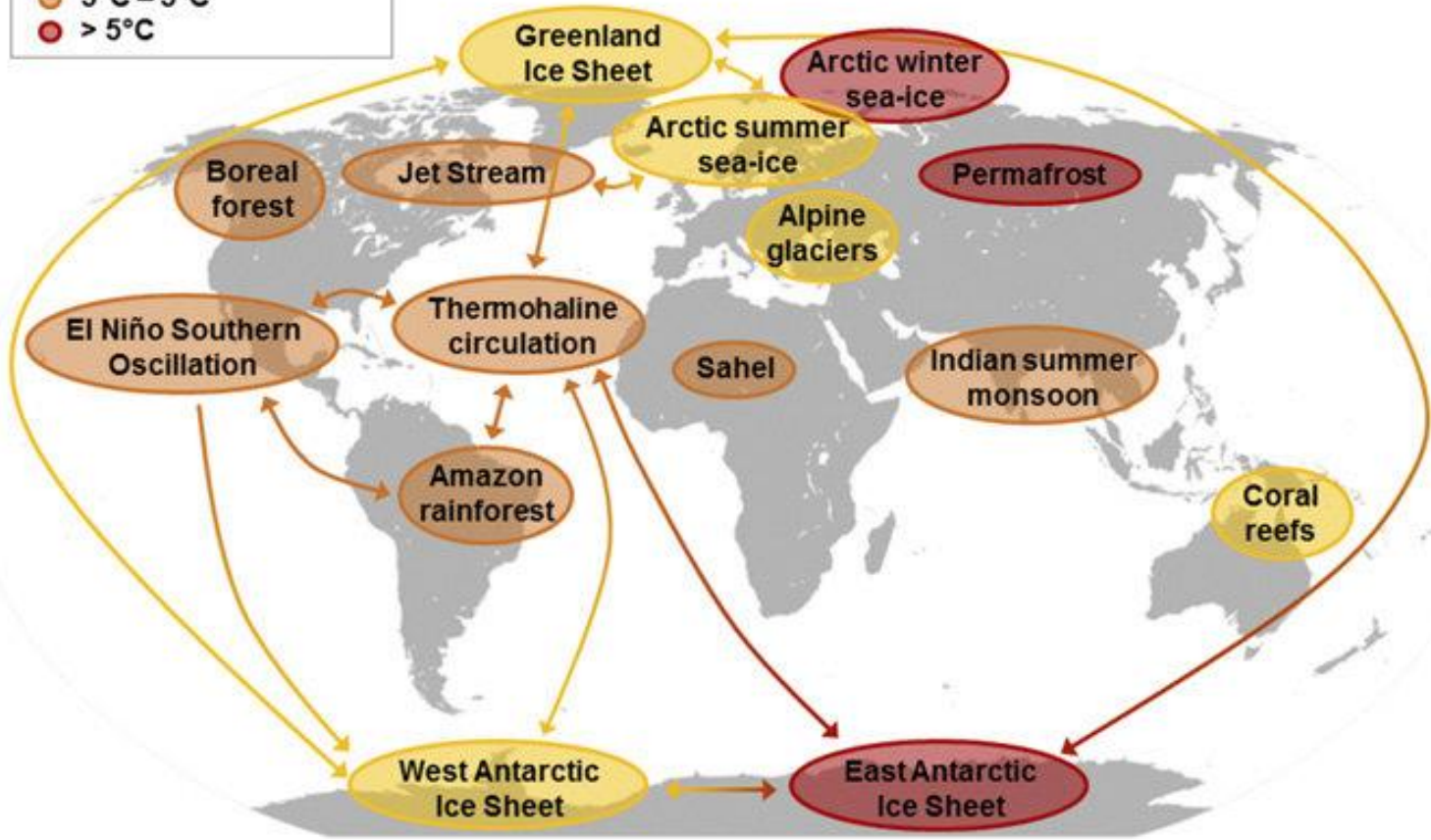
# The tragedy of Coral Reefs





**Tipping elements at risk:**

- 1°C – 3°C
- 3°C – 5°C
- > 5°C





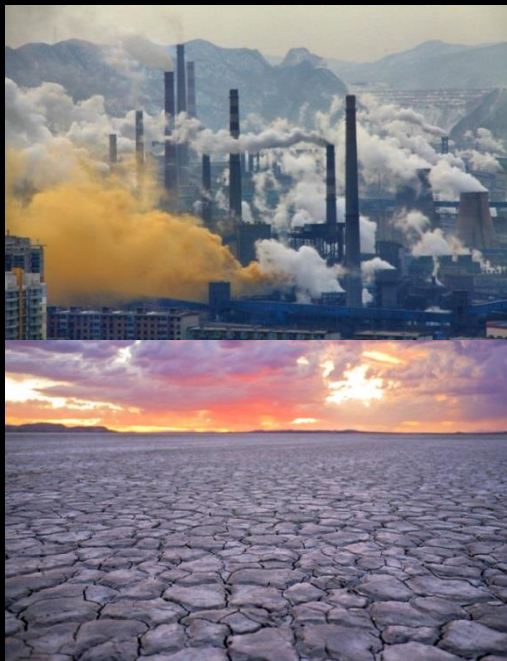
# We Know





# The two sides of the ecological challenge

## Climate Change



## Loss of Nature





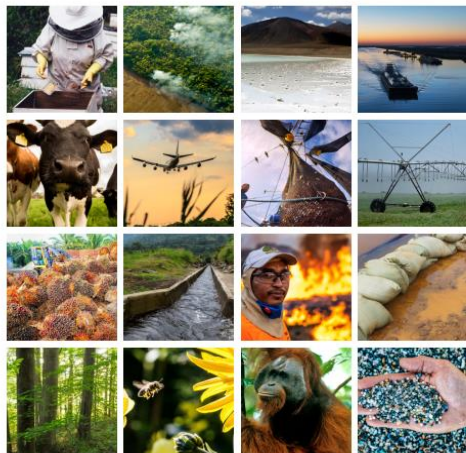
**We (begin to)  
Understand**

**The Consequences  
for us  
of our impact  
on Nature**





# Climate Change & Nature Loss are an Economic Risk and Cost



## The Nature of Risk

A Framework for Understanding Nature-Related Risk to Business



COMMITTED TO  
IMPROVING THE STATE  
OF THE WORLD

New Nature Economy series

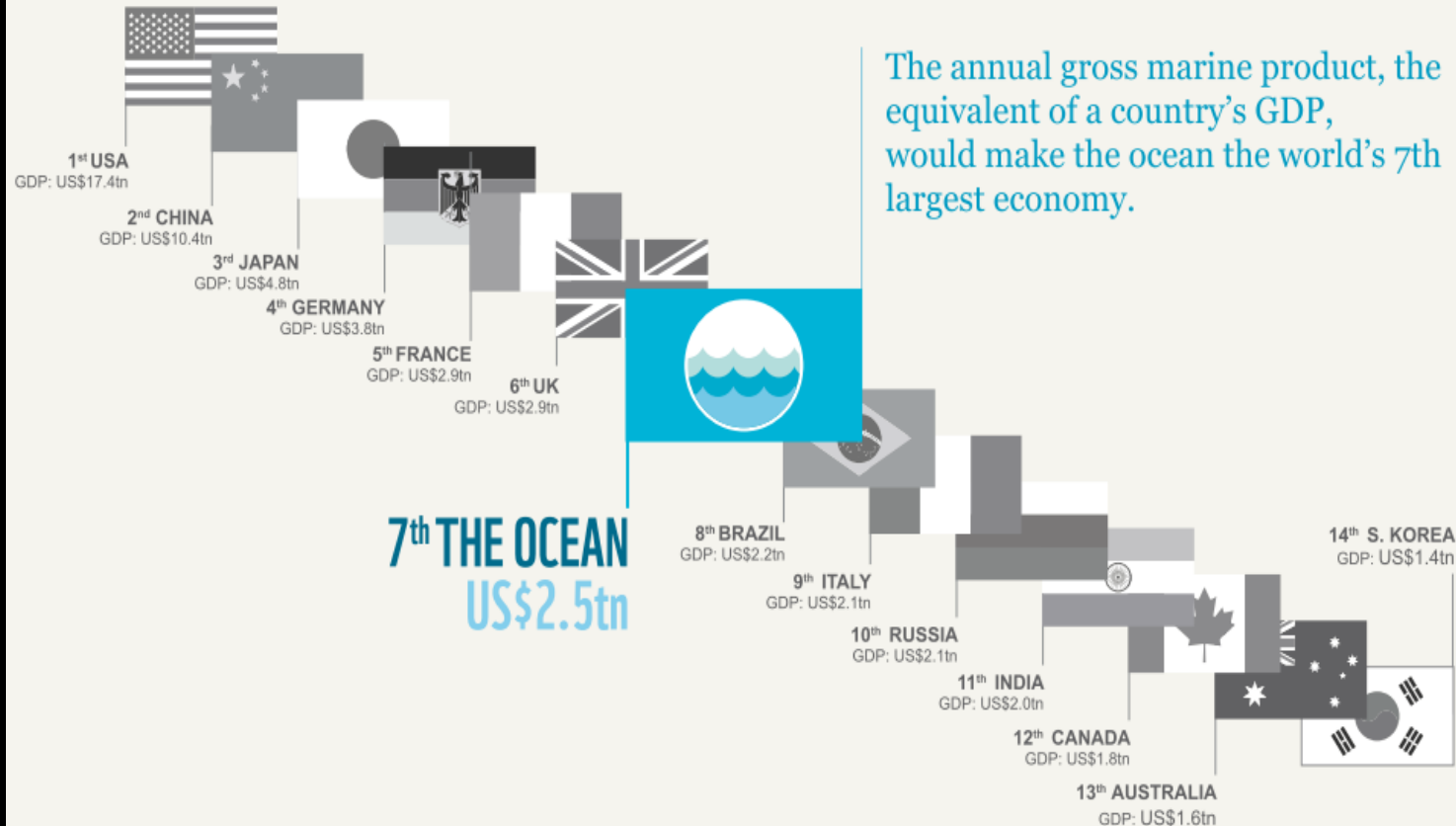
## Nature Risk Rising: Why the Crisis Engulfing Nature Matters for Business and the Economy

In collaboration with PwC

January 2020



US\$ 44 T of economic  
value generation at risk  
due to dependence of  
business on nature's services

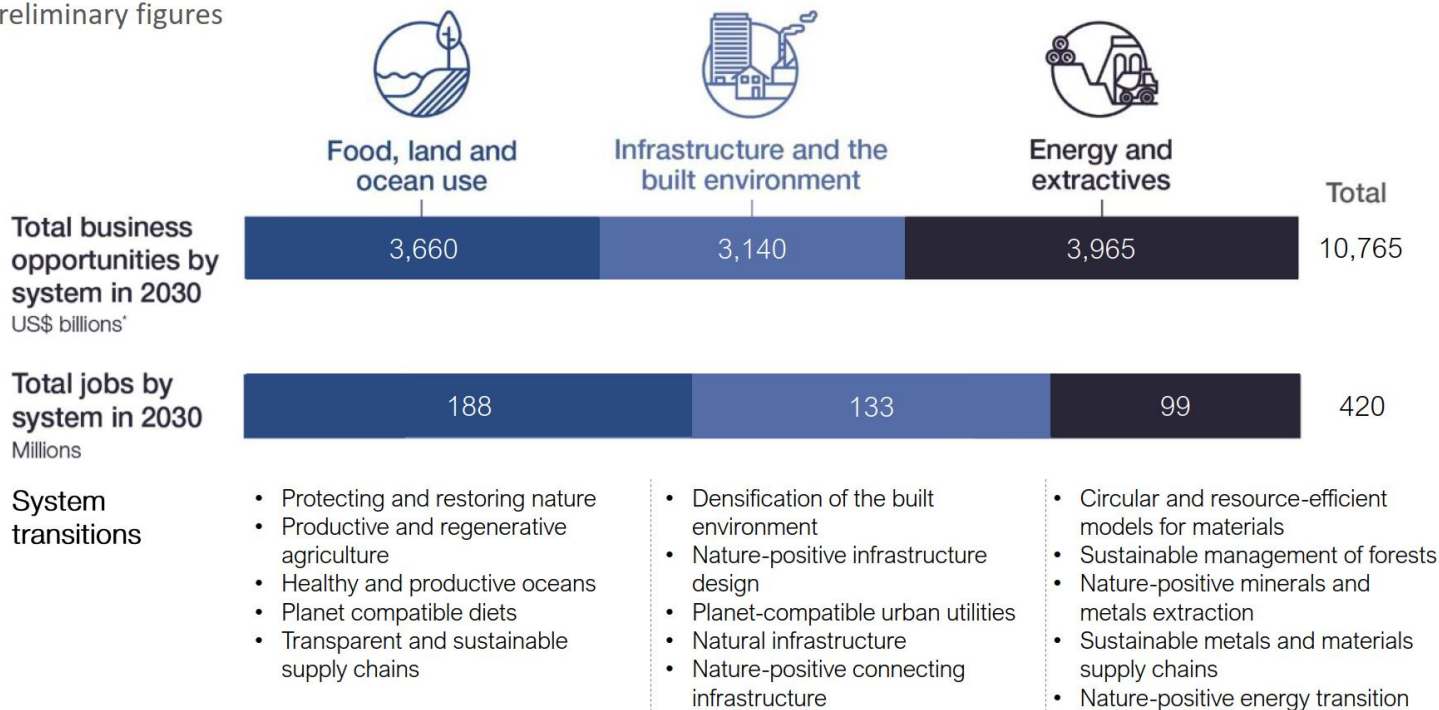




# The Economic Opportunity

Five transitions for nature-positive pathways have been identified in each of the three systems that could generate USD10.8 trillion and create 420 million jobs by 2030

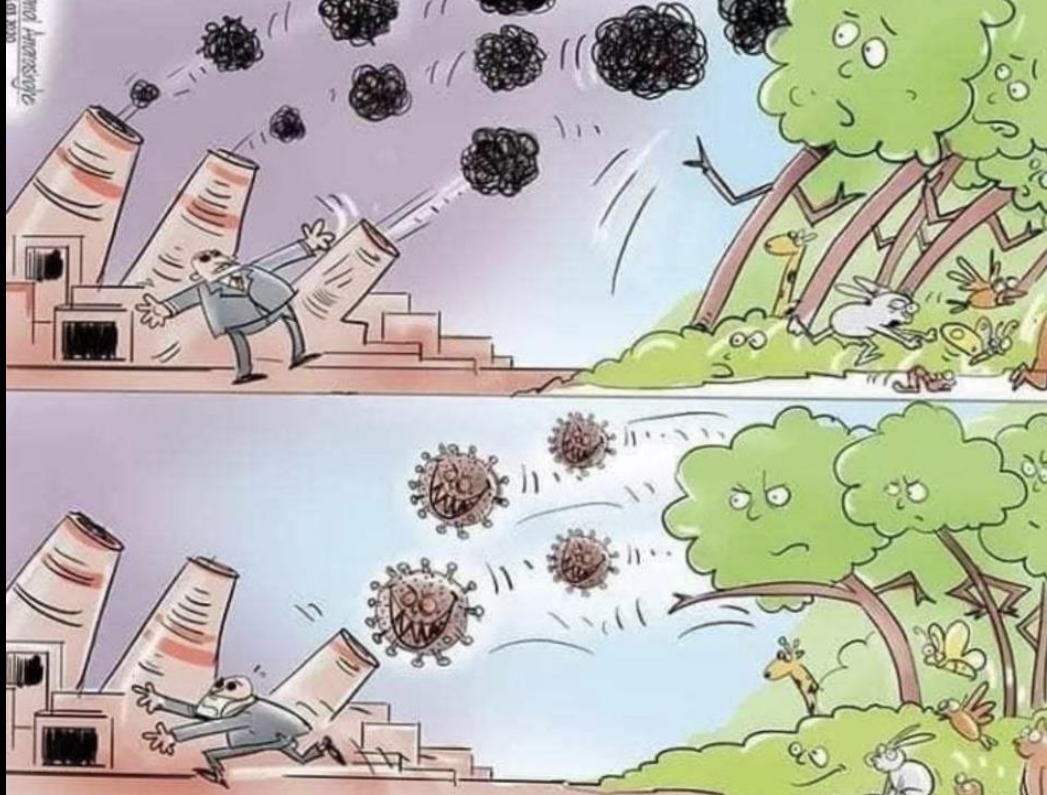
Preliminary figures



SOURCE: AlphaBeta analysis

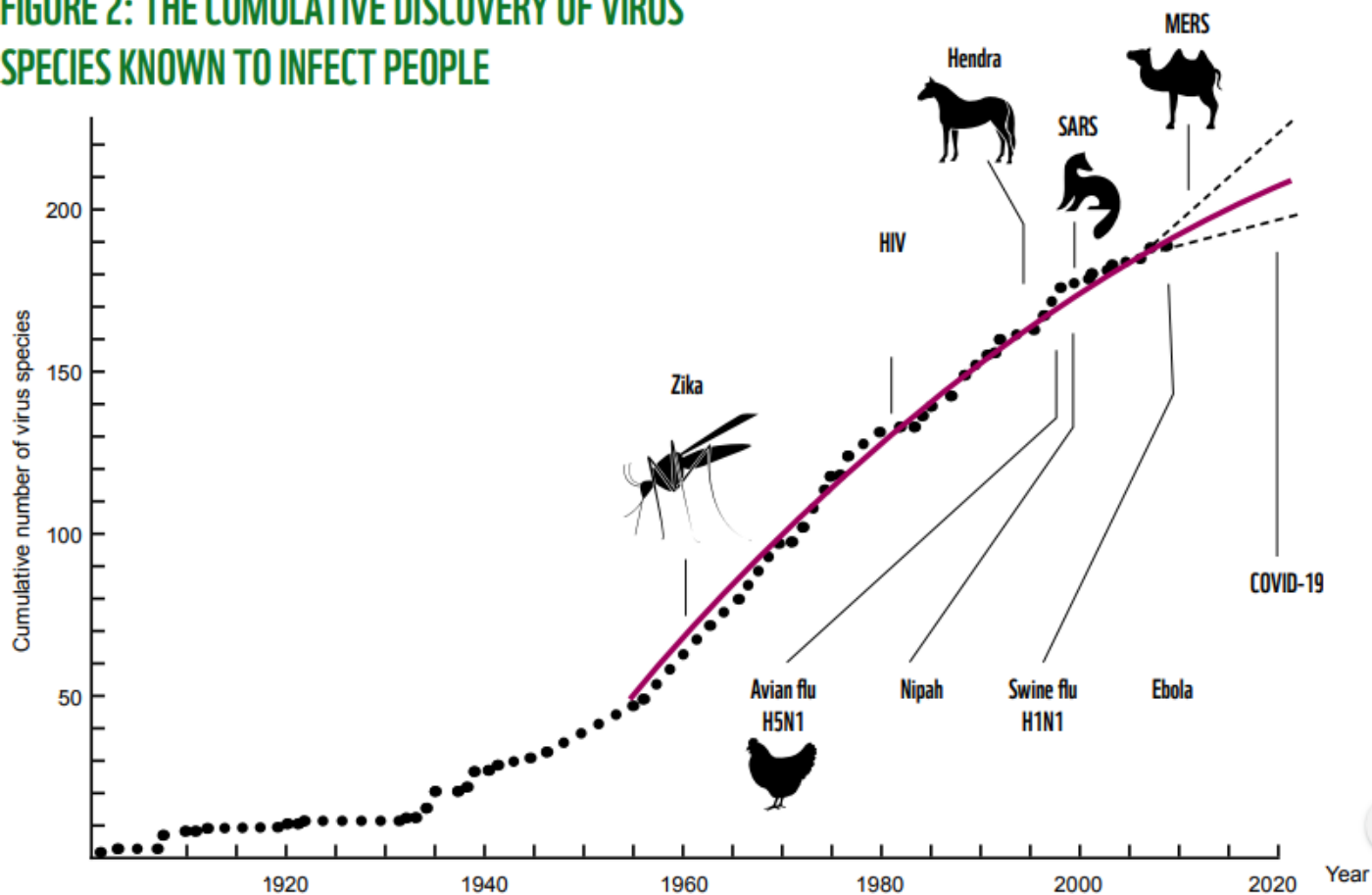


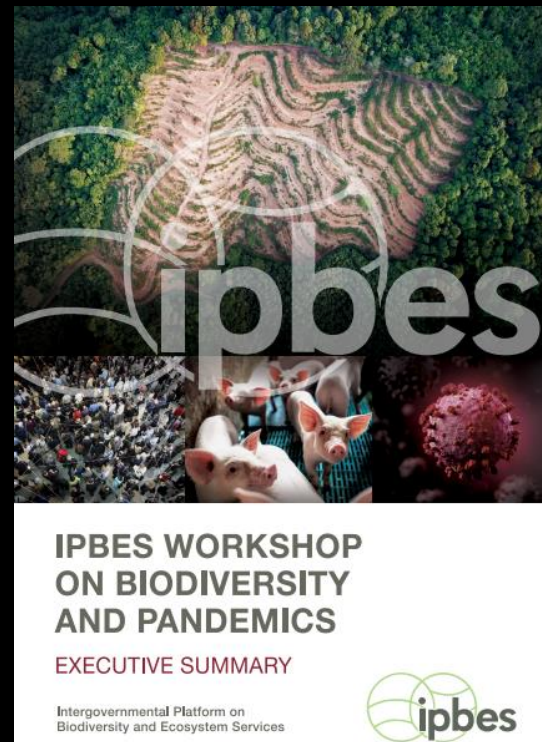
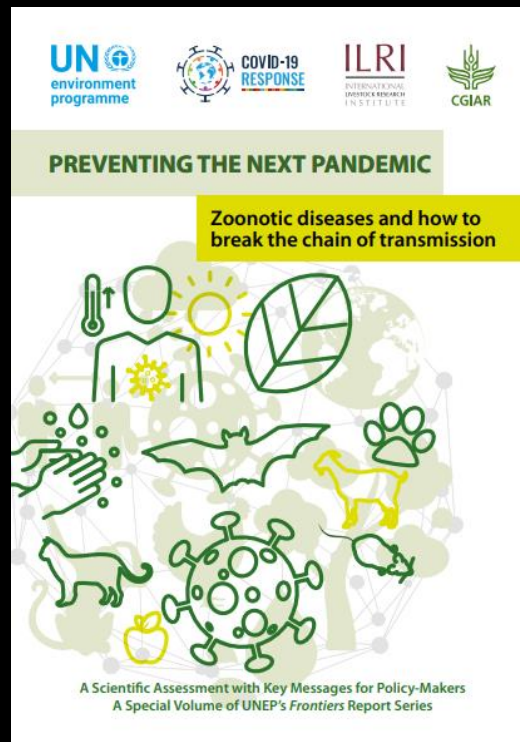
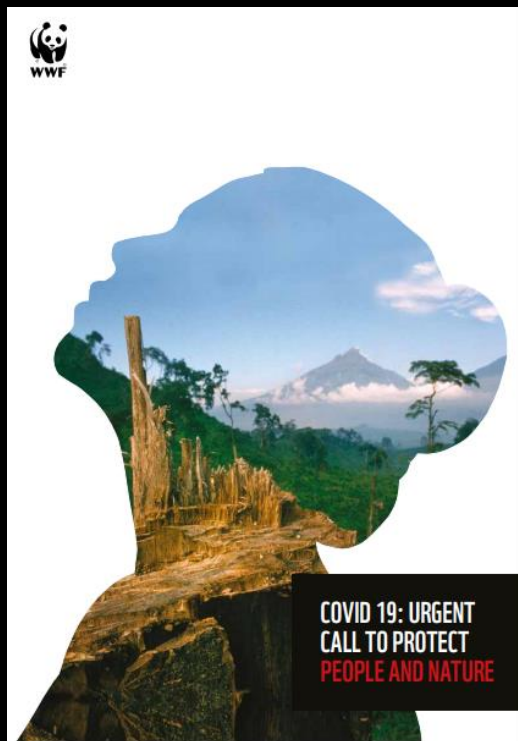
# We must rebalance our broken relationship with the Planet





**FIGURE 2: THE CUMULATIVE DISCOVERY OF VIRUS SPECIES KNOWN TO INFECT PEOPLE**







**Covid-19 is the result of our imbalance with nature and the animal world.**

**75% of new human infectious diseases come from other animals**

- wild animals
- domesticated animals



## WILDLIFE TRADE & CONSUMPTION



DEFORESTATION –  
*also increases human/wildlife contacts*



## INDUSTRIAL ANIMAL FARMING



There are more than 1,000 mink farms in Denmark

## **Denmark to cull up to 17 million mink amid coronavirus fears**



**We MUST  
&  
We CAN**

**Halt and Reverse  
Nature Loss**

# NATURE POSITIVE BY 2030



HALT & START TO REVERSE THE LOSS OF BIODIVERSITY & PUT NATURE ON A PATH TO RECOVERY FOR THE BENEFIT OF ALL PEOPLE & THE PLANET

## THE GOALS

**PROTECT  
& RESTORE  
NATURAL  
HABITATS**



**SAFEGUARD  
DIVERSITY  
OF LIFE**



**HALVE  
FOOTPRINT OF  
PRODUCTION  
&  
CONSUMPTION**



## THE SOLUTIONS

- PROTECT AT LEAST 30% AND SUSTAINABLY MANAGE THE REST
- WORK TO RESTORE NATURAL HABITATS
- RECOGNIZE INDIGENOUS PEOPLES' LAND & WATER RIGHTS



- HALT HUMAN-INDUCED EXTINCTIONS
- RECOVER SPECIES POPULATIONS
- STOP UNSUSTAINABLE WILDLIFE EXPLOITATION & TRADE



- TRANSITION TO SUSTAINABLE PRACTICES E.G.: FOOD SYSTEMS & AGRICULTURE, FISHING, FORESTRY, INFRASTRUCTURE, EXTRACTIVES



# 2021 Super Year for the Environment & Sustainability



**United Nations** Framework  
Convention on Climate Change



**Convention on  
Biological Diversity**



For a **carbon neutral**  
& **nature positive world**

# FOR NATURE FOR US



[PANDA.ORG/PANDEMICS](https://panda.org/pandemics)



together possible.®

